

CLD HoardSafe

Site hoarding system



HoardSafe is CLD's range of sustainable and secure hoarding. Manufactured from composite recycled plastic panels which click easily into place and are installed on steel rails.

The system can be fixed to blocks or ground buried. CLD's range of permanent fencing can easily be installed after the hoarding is removed, using the existing posts.

HoardSafe can be vinyl wrapped with custom designs and re-used multiple times.

Ideal for

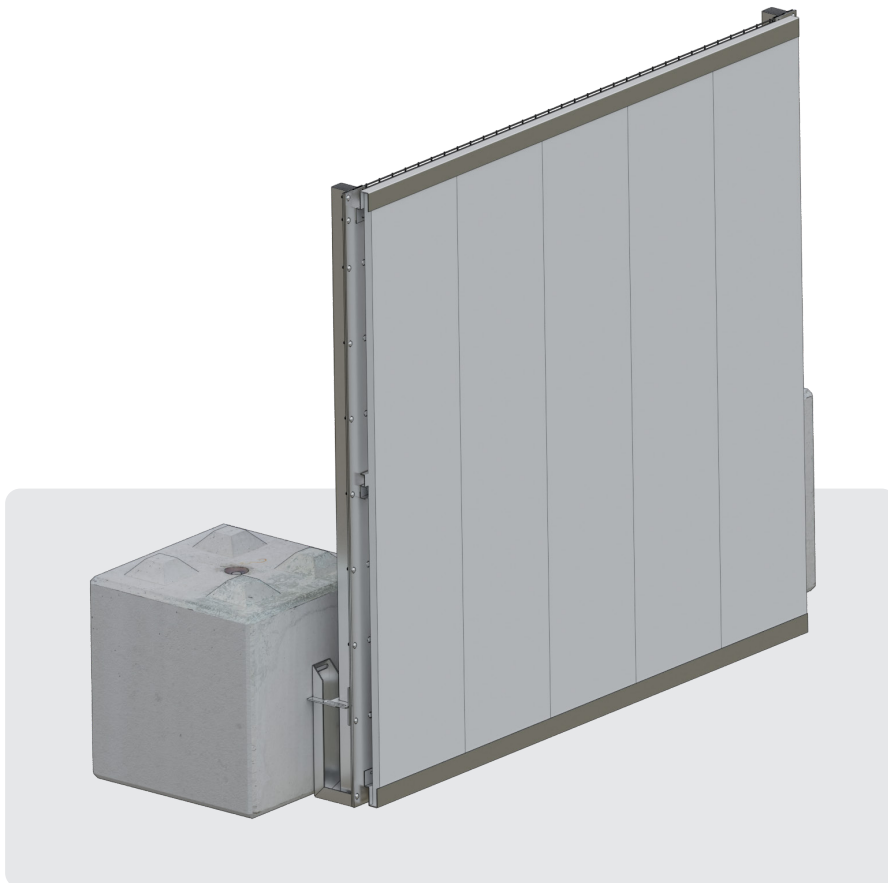
- Construction sites
- Protecting people in open spaces



Conforms to



Isometric View



Key Features

Sustainable alternative to standard site hoarding

Easily updates to a permanent fence line

BS EN 1991 wind loading tested to in excess of 100 mph

Dug in or surface mounted foundation options

Branding opportunities for sites

Hire and purchase options available

Scan the QR code to find out more



Product Technical Information

| | |
|----------------------------------|--|
| Standards: | BS EN 1991 Wind Loading BS EN ISO 1461:2009 BS EN 13438:2013 TWf2012:01 Temporary Works Forum |
| Panel Type: | 35mm thick recycled PVC board, 500mm wide panels, height to suit |
| Panel Width: | Minimum 500mm |
| Height: | 1806mm to 3006mm to suit requirements |
| Finish: | White PVC board as standard. Other RAL single colour options available. Can be vinyl wrapped with custom designs. Top & bottom rails in 3mm pre-galvanised steel, can be polyester powder-coated to minimum 80 microns to any RAL colour. |
| Top Edge Projection: | n/a |
| Panel Installation | Bottom rail to follow ground level |
| Security topping options: | Options such as anti-climb available on request |
| Posts: | Special flanged post, galvanised after manufacture |
| Post dimensions: | 80mm x 60mm |
| Maximum post centres: | 2520mm |
| Fixings: | M8 cup square bolt with washer & hex nut |
| Foundations: | Post fixed to kentledge block using 4 way adjustable bracket. Ground bury option available. Can also be dug in. Set posts in holes minimum of 450mm square x 800mm deep. Note: Contractor/ client is responsible for the foundation size suitable for the ground conditions and height of fence. |
| Warranty | Steel and mesh covered by CLD's warranty - minimum of 15 years against manufacturing defects. |

Disclaimer

Fencing should be installed in accordance with BS 1722-14. Every care has been taken to ensure that all information provided on this data sheet is accurate. CLD Fencing Systems Ltd reserves the right to change product specification at any time. Please ensure that you have the latest information which can be found on our website or by contacting our team.

Document Reference - 20221207_CLD_HoardSafe_DS