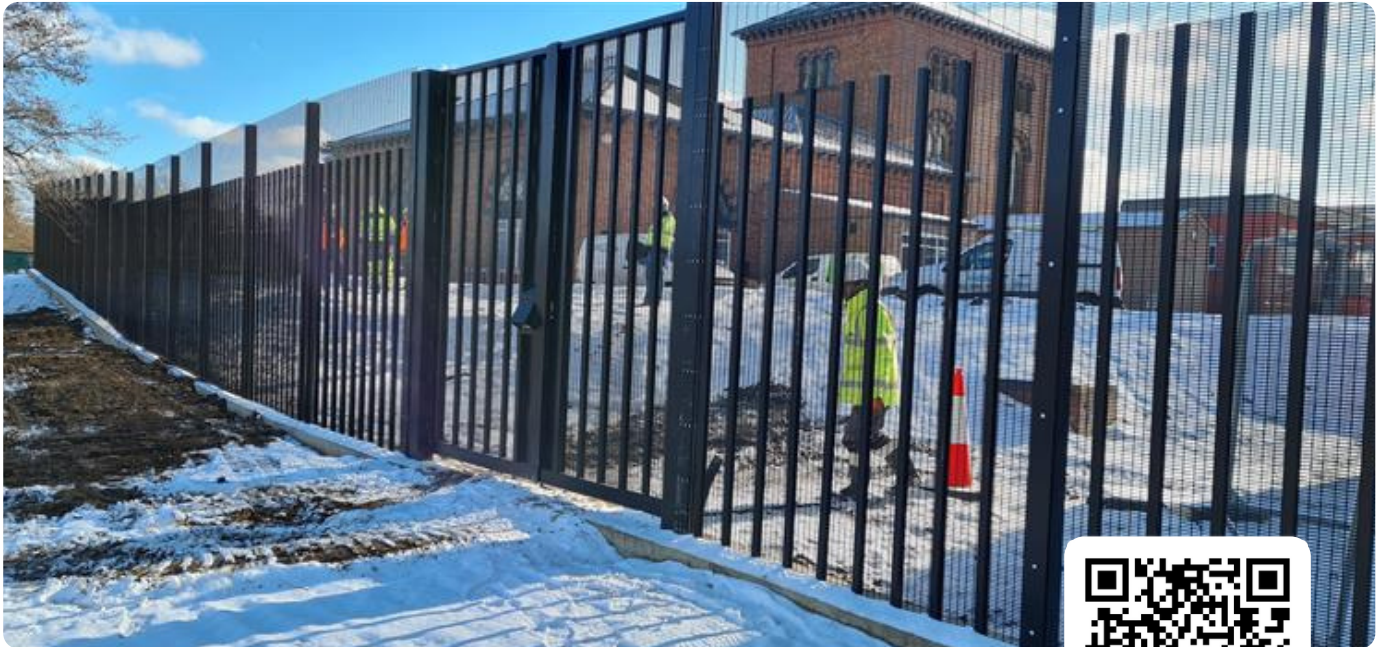


# CLD LockMaster S3

High Security Swing Gate System to LPS 1175 C5 (SR3) Issue 8



Find out more  
Scan for more information

## Description

CLD LockMaster S3 swing gates have been specially developed to blend in seamlessly with a CLD Securus fence line. Available using a Securus S3 infill panel, LockMaster S3 offers security rated access control, whilst maintaining aesthetics. Rigorously tested by the Loss Prevention Certification Board (LPCB) to guarantee a minimum delay of 5 minutes against attack, LockMaster S3 is also Secured by Design accredited, making it a police preferred specification for security.

## Features

Matches CLD Securus  
fenceline

Double/single in/out opening

Security rated gates



Exploded view of post and fixing details for the CLD LockMaster S3  
This product has additional features not demonstrated for security reasons



cld-systems.com

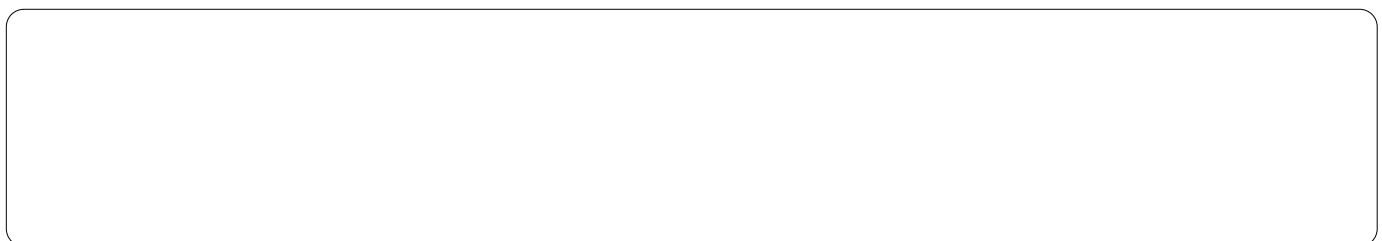
# CLD LockMaster S3

High Security Swing Gate System to LPS 1175 C5 (SR3) Issue 8

## Product Technical Information

|                          |  |
|--------------------------|--|
| <b>Standard</b>          | LPS 1175<br>BS1722-14:2017<br>BS EN ISO 141:2009<br>BS EN 13438:2013<br>Secured By Design  |
| <b>Description</b>       | Open mesh steel high security gate system with mesh infill, to match fencing   |
| <b>Panel Options</b>     | Panel infill to match CLD Securus S2   |
| <b>Panel Width</b>       | To suit mesh infill panels: Single leaf: 900mm minimum to 4000mm maximum. Double leaf: 1200mm to 8000mm maximum  |
| <b>Available Heights</b> | Double 2440mm to 5000mm to match fence panel. Single 2440mm to 3000mm or up to 5000mm with lintel panel  |
| <b>Nominal heights</b>   | 2.4m to 5.0m   |
| <b>Finish</b>            | Polyester powder-coated to match mesh infill.<br>Any RAL colour  |
| <b>Post Dimensions</b>   | 80mm x 80mm minimum  |
| <b>Foundations</b>       | Set posts in holes 450mm square x 950mm deep min. Note: Contractor/ client is responsible for the foundation size suitable for the ground conditions   |
| <b>Configuration</b>     | Double leaf/single leaf. Inward or outward opening as required   |
| <b>Gate Frame</b>        | To suit mesh infill panels:<br>Vertical stiles: minimum of 50mm x 50mm x 3mm SHS<br>Horizontal rails: minimum of 50mm x 50mm x 3mm SHS   |
| <b>Locking</b>           | Slide bar with certified padlock or key operated hook bolt lock  |
| <b>Hinges</b>            | 3 x hinge sets with min M20 eye bolts  |
| <b>Warranty</b>          | Minimum of 15 years against manufacturing defects.   |
| <b>Notes</b>             | All dimensions are nominal, for further information please contact CLD Fencing Systems. Information is correct at time of production. As part of our policy of continuous improvement, we reserve the right to alter product specification without notice. |

## System Details



## Disclaimer

Fencing should be installed in accordance with BS 1722-14. Every care has been taken to ensure that all information provided on this data sheet is accurate. CLD Fencing Systems Ltd reserves the right to change product specification at any time. Please ensure that you have the latest information which can be found on our website or by contacting our team.

Document Reference - CLD\_LockMaster\_S2\_DS\_20220223